

Dental Implant

JD EVOLUTION

JD EVOLUTION

UN ALTRO PASSO AVANTI.



anno 1965



anno 1980



anno 1998



anno 2009

JD EVOLUTION

JDentalCare progetta e sperimenta soluzioni implantari che uniscono all'avanguardia tecnologica la semplicità di utilizzo per garantire una completa efficacia del trattamento clinico.

La linea JDEvolution è il frutto della Ricerca che JDentalCare ha operato per fornire ai dentisti un sistema implantare evoluto, semplice ed efficace in tutte le Indicazioni cliniche.

L'esclusivo design di JDEvolution lo rende indicato per tutte le situazioni cliniche, in particolare per quelle che presentano una ridotta quantità o qualità dell'osso. La facilità con la quale penetra nell'osso, la possibilità di modificarne continuamente la direzione durante l'inserimento e di utilizzare protocolli di fresatura ridotti conferiscono a JDEvolution una completa flessibilità.

JDEvolution offre:

- Ottima stabilità primaria, anche in presenza di osso compromesso
- Grande facilità di inserimento grazie alle lame apicali
- Platform switching integrato per una maggiore stabilità dei tessuti molli
- Piattaforma protesica unica per tutti i diametri implantari

L'evoluzione è un processo fatto di tanti piccoli passi nella stessa direzione: JDEvolution è un altro passo avanti.

JD EVOLUTION

SIMPLE INSERTION, NATURAL STABILITY

FEATURES

Anatomic coronal collar

Expanding tapered inner body

Self-cutting capacity in both directions

Apical cutting blades

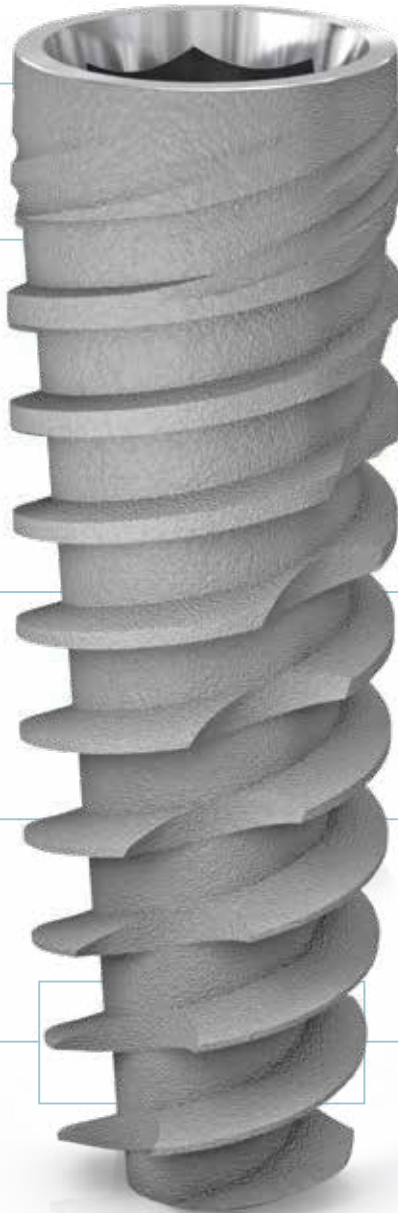
ADVANTAGES

Reduces stress concentration on the crestal bone and maximizes bone volume around the implant neck for stable hard and soft tissue

Favours gradual condensation of bone and guarantees high primary stability, especially in compromised bone situations

Makes it possible to achieve high primary stability with low torque

Allows it to engage smaller osteotomy



JD EVOLUTION

A SINGLE PROSTHETIC CONNECTION



FEATURES

- Single prosthetic connection for all diameters, Ø 3.7, Ø 4.3, Ø 5.0, Ø 6.0.
- Dual system conical connection with internal hexagon.
- Built-in platform switching.
- Complete choice of temporary and final abutments with healing abutments of various heights and emergence profiles.

ADVANTAGES

- Simplicity of clinical processes.
- Reduced inventory and enhanced working flexibility.
- Excellent connection stability.
- Sealed connection, virtually eliminating implant-abutment microgap due to the specific connection design
- Superior mechanical strength.
- Greater hard and soft tissue stability.



JD EVOLUTION

OUR AIM IN RESEARCH: SECURITY FOR YOU

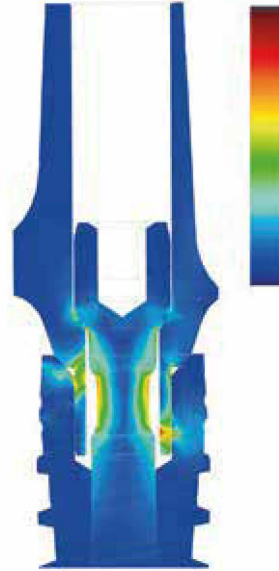
JDentalCare® has designed all the components of the JDEvolution implant system so that it can guarantee maximum component strength and security. To do so, the JDentalCare® R&D&I team uses the latest CAD 3D design technology and the most advanced structural simulation codes in their everyday work.

All components of the JDEvolution system have undergone structural calculations aimed at optimising their features and ensuring long-lasting reliability.

To obtain an optimum surface morphology, the JDEvolution implant is subjected to an oxidising treatment using organic acid oxidation processes to achieve just the right surface roughness along with a high degree of surface wettability.

The microtopography of the surface created with this technology increases osteoblast adhesion, platelet activation and growth factor release, favoring accelerated neo-osteogenesis.

Treatment with this kind of organic acid gives the implant surface a micrometer range roughness in line with the current optimum standards, thus ensuring faster, more predictable and more secure osseointegration.



Structural simulation of a lateral loading of the JD EVOLUTION implant.

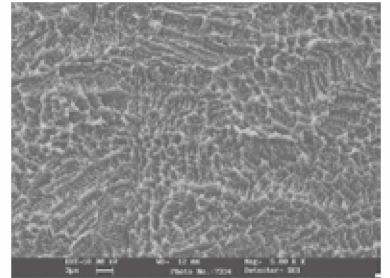
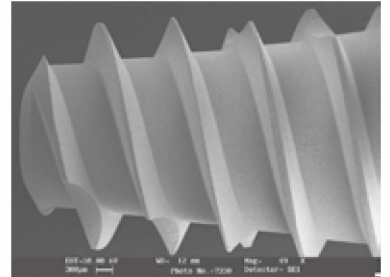
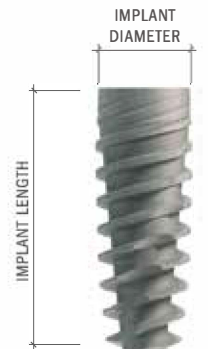


Image of the bioactive surface of the JD EVOLUTION implant (electronic microscope).

DIAMETERS AND LENGTHS

The JDEvolution dental implant is available in the diameters and lengths shown in this chart:

Implant Diameter	6 mm	8 mm	10 mm	11,5 mm	13 mm	15 mm	18 mm
Ø 3.7 mm							
Ø 4.3 mm							
Ø 5.0 mm							
Ø 6.0 mm							





JDENTALCARE

www.jdentalcare.com