



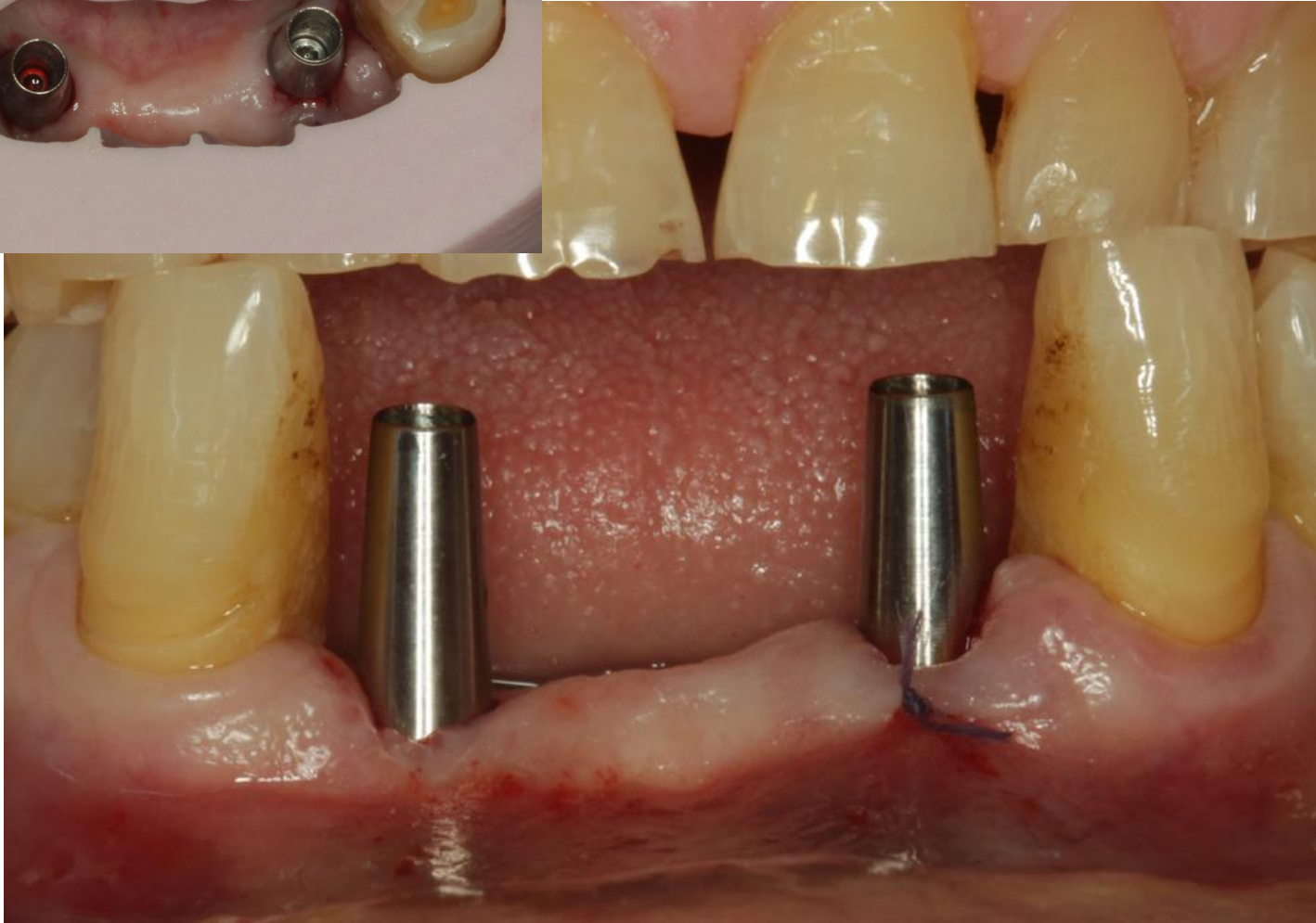
JDENTAL CARE



Treatment plan: extraction of 3.2 and placement of two JDEvolution implants for the immediate rehabilitation of the lower incisors.



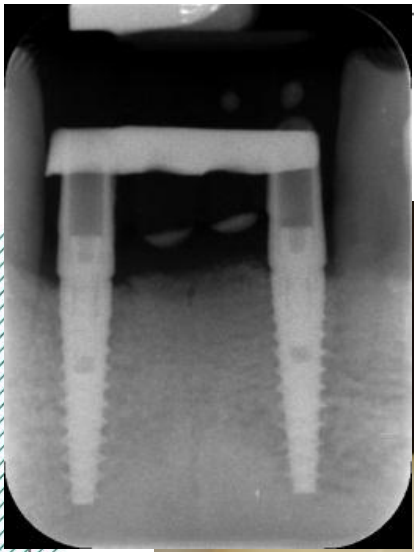
JDENTAL CARE



JDEvolution implants placement with a flapless technique using a prosthetic guide. Platform-switched definitive titanium abutments were placed immediately following the surgical phase.



JDENTALCARE



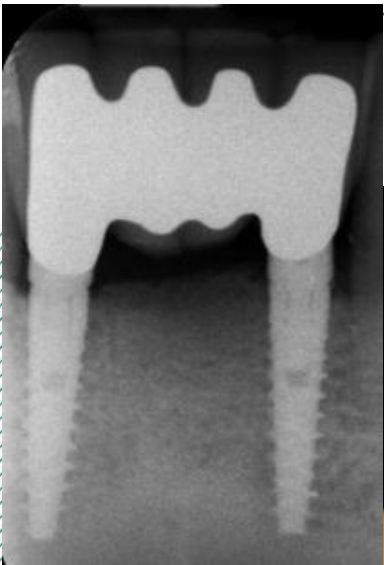
The temporary restoration was then relined in situ with acrylic resin, refined, polished and cemented.



After 3 months a conventional impression of the definitive abutments was made using a retraction cord.



JDENTAL CARE



The final restoration was seated avoiding abutment disconnection.



Clinical view and periapical radiograph taken 1 year later.