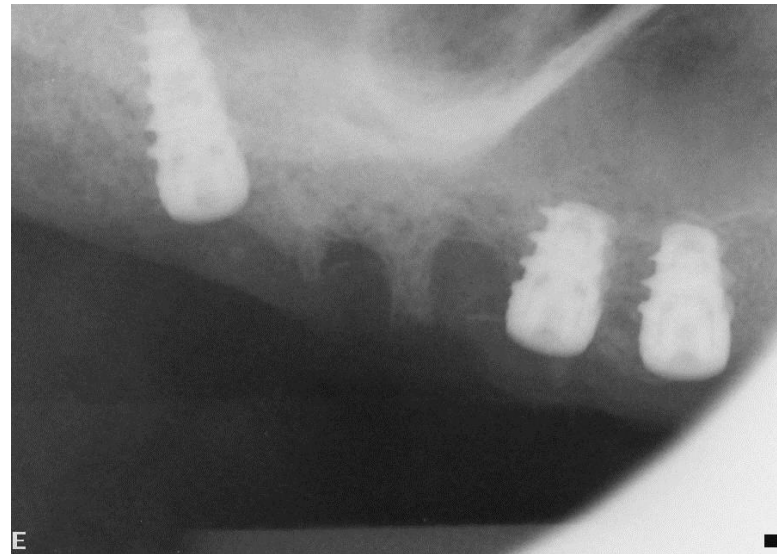


A 50 year-old male, healthy and non smoker presented with a complain of: 'I want to replace my teeth on upper right quadrant'. Following CT examination, it was realized a very limited bone height of 6mm. Two treatment options were considered: bone graft and long implants versus short implants and possibly more implants. Supported by the recent literature, it was decided to use JDEvolution® 6mm short implants. Two 6x5mm implants were placed in premolar region and one 10x4.3mm implant was placed tilted in the tuber maxillae to avoid the maxillary sinus.



E



After 4 months the final metal ceramic restoration was screwed on implants.



Periapical radiograph taken after 1 year of loading. The use of JDEvolution® 6mm short implants represents a valid treatment option in edentulous maxillary and mandibular areas with limited bone height.

