

Dental Implant

JD EVOLUTION[®]

JD EVOLUTION®

A STEP AHEAD



year 1965



year 1980



year 1998



year 2009

JD EVOLUTION®

JDentalCare® designs and develops implant systems that combine vanguard technology with simplicity of use and guarantee full efficacy in clinical treatment.

The JDEvolution® line of implants is the product of JDentalCare®'s research to provide implantology professionals with a simple, efficient and advanced system for each and every clinical indication.

Because of its exclusive design, JDEvolution® is indicated for all clinical situations, particularly where the bone quantity or quality is low. The ease with which it penetrates the bone, the possibility of continuously changing direction during insertion and its reduced drilling protocol make JDEvolution® uniquely flexible.

JDEvolution® offers:

- Optimum primary stability, even in compromised bone situations.
- Great ease of insertion, thanks to apical cutting blades.
- Marginal hard and soft tissue stability, thanks to its reverse coronal taper, its built-in platform switching and its stable and sealed connection.
- Simplicity of processes, thanks to a single prosthetic connection for all implant diameters.

Evolution is the result of a process of innumerable tiny steps seeking ongoing improvement and maximum quality: JDEvolution® is a fresh step forward.

JD EVOLUTION[®]

SIMPLE INSERTION, NATURAL STABILITY

FEATURES

Anatomic coronal collar

Expanding tapered inner body

Self-cutting capacity in both directions

Apical cutting blades

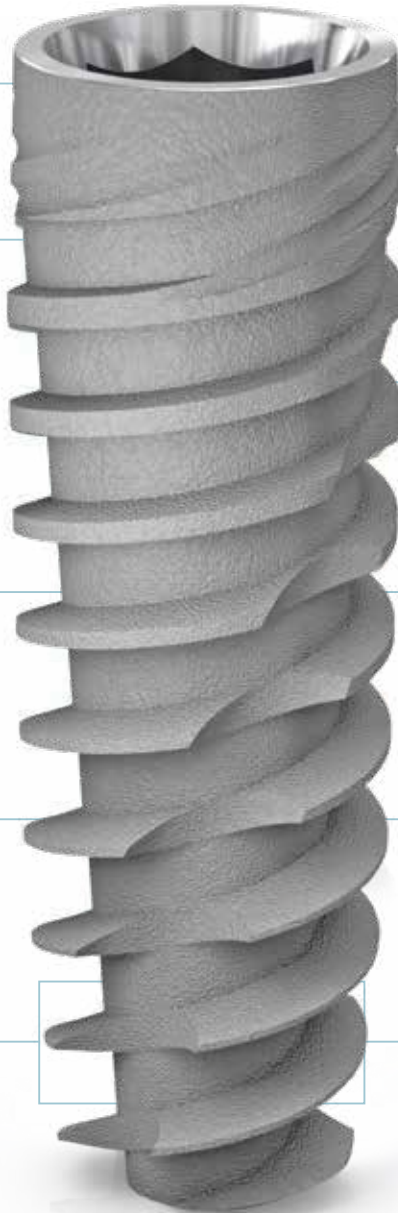
ADVANTAGES

Reduces stress concentration on the crestal bone and maximizes bone volume around the implant neck for stable hard and soft tissue

Favours gradual condensation of bone and guarantees high primary stability, especially in compromised bone situations

Makes it possible to achieve high primary stability with low torque

Allows it to engage smaller osteotomy



JD EVOLUTION®

A SINGLE PROSTHETIC CONNECTION

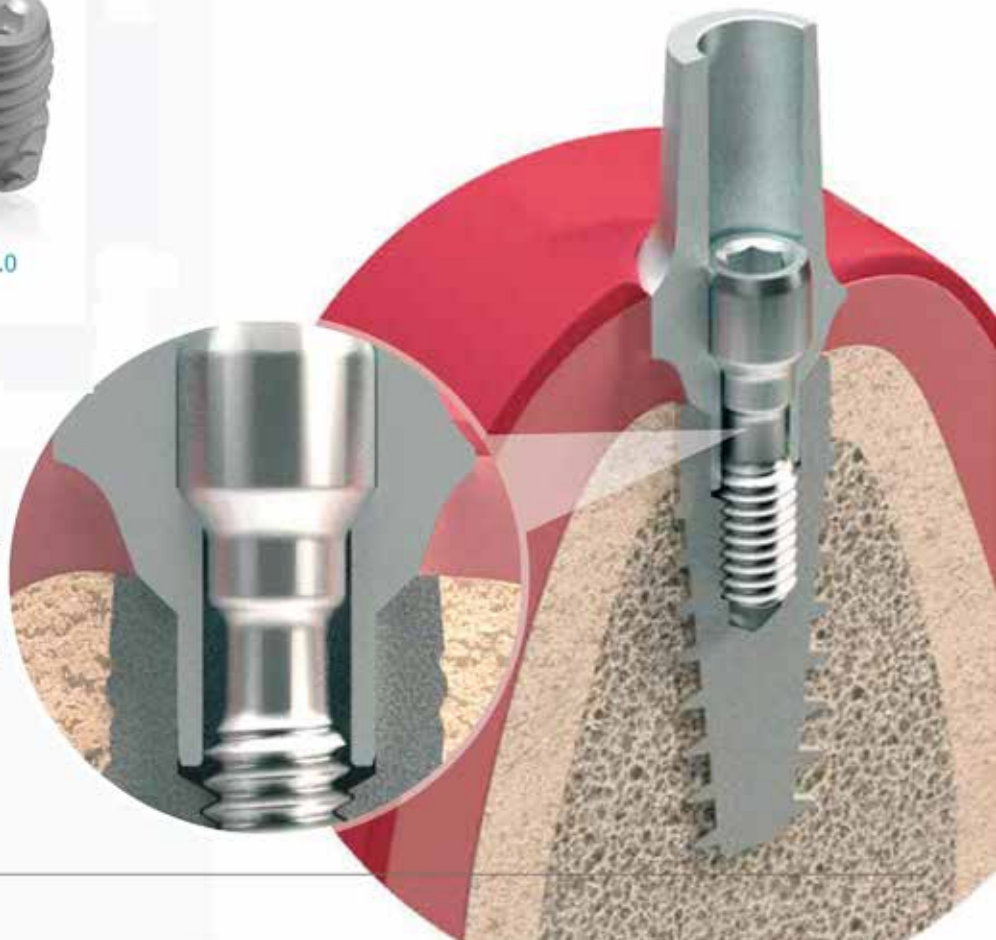


FEATURES

- Single prosthetic connection for all diameters, Ø 3.7, Ø 4.3, Ø 5.0, Ø 6.0.
- Dual system conical connection with internal hexagon.
- Built-in platform switching.
- Complete choice of temporary and final abutments with healing abutments of various heights and emergence profiles.

ADVANTAGES

- Simplicity of clinical processes.
- Reduced inventory and enhanced working flexibility.
- Excellent connection stability.
- Sealed connection, virtually eliminating implant-abutment microgap due to the specific connection design.
- Superior mechanical strength.
- Greater hard and soft tissue stability.



JD EVOLUTION®

OUR AIM IN RESEARCH: SECURITY FOR YOU

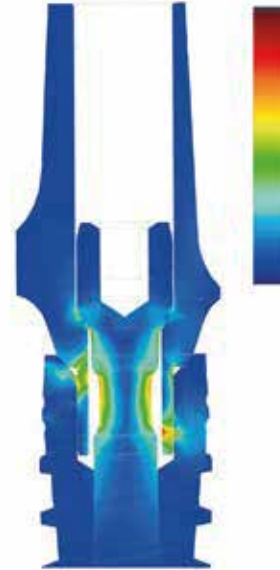
JDentalCare® has designed all the components of the JDEvolution® implant system so that it can guarantee maximum component strength and security. To do so, the JDentalCare® R&D&I team uses the latest CAD 3D design technology and the most advanced structural simulation codes in their everyday work.

All components of the JDEvolution® system have undergone structural calculations aimed at optimising their features and ensuring long-lasting reliability.

To obtain an optimum surface morphology, the JDEvolution® implant is subjected to an oxidising treatment using organic acid oxidation processes to achieve just the right surface roughness along with a high degree of surface wettability.

The microtopography of the surface created with this technology increases osteoblast adhesion, platelet activation and growth factor release, favoring accelerated neo-osteogenesis.

Treatment with this kind of organic acid gives the implant surface a micrometer range roughness in line with the current optimum standards, thus ensuring faster, more predictable and more secure osseointegration.



Structural simulation of a lateral loading of the JD EVOLUTION® implant.

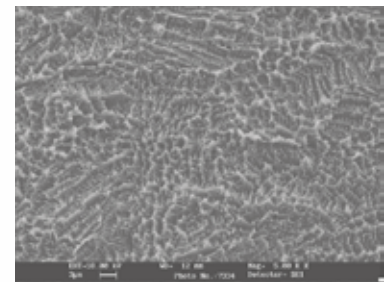
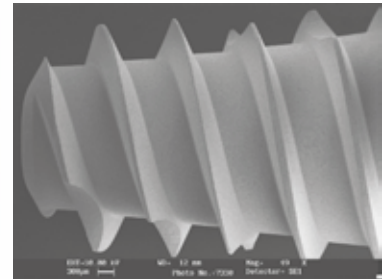
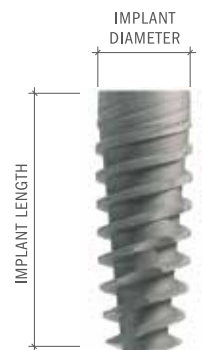


Image of the bioactive surface of the JD EVOLUTION® implant (electronic microscope).

DIAMETERS AND LENGTHS

The JDEvolution® dental implant is available in the diameters and lengths shown in this chart:

| Implant Diameter | 6 mm | 8 mm | 10 mm | 11,5 mm | 13 mm | 15 mm | 18 mm |
|------------------|------|------|-------|---------|-------|-------|-------|
| Ø 3.7 mm | | | | | | | |
| Ø 4.3 mm | | | | | | | |
| Ø 5.0 mm | | | | | | | |
| Ø 6.0 mm | | | | | | | |





JDENTALCARE

www.jdentalcare.com